

Intusoft Newsletter

Personal Computer Circuit & System Design Tools



Copyright © Intusoft, All Rights Reserved

Issue #55 Mar. 1999

Tel. (310) 833-0710

Fax (310) 833-9658

New Magnetics Designer

Intusoft is releasing a new version of its popular transformer and inductor design program, Magnetics Designer. The new version 4.0 represents a significant breakthrough in terms of performance and new features. A major enhancement includes

Continued on pg. 2

In This Issue

- 2 **New Magnetics Designer gets FEA**
- 4 Free SMPS design book
- 5 Why You Need ICAP/4 Automated Measurements
- 7 Power Inverter Simulation
- 10 Using SPICE More Effectively: Passive Element Modeling
- 14 SPICE Model Web Links
- 15 SPICE Training

Using SPICE More Effectively

For the novice, and sometimes well seasoned SPICE users, analog simulation can present many pitfalls. In this section, we try to

Continued on pg. 10

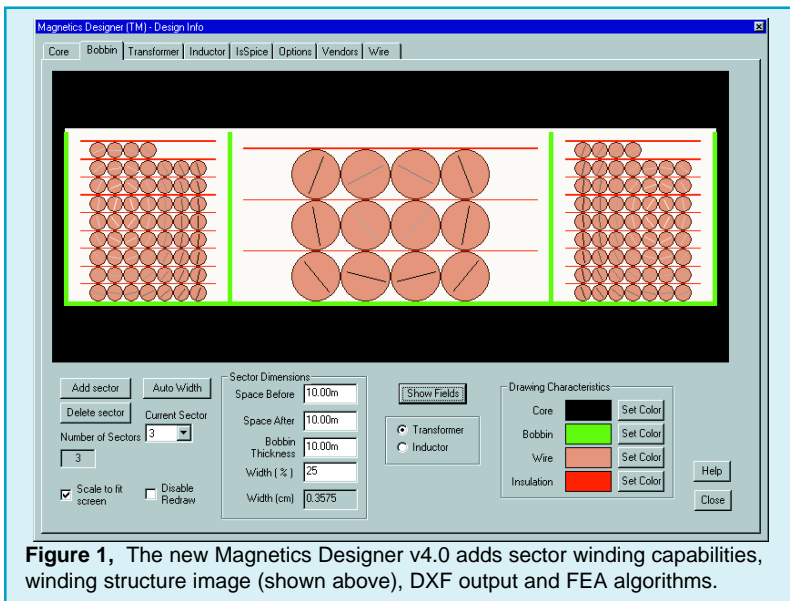


Figure 1, The new Magnetics Designer v4.0 adds sector winding capabilities, winding structure image (shown above), DXF output and FEA algorithms.

New Magnetics Designer v4.0

Continued
from pg. 1

the ability to handle sector winding configurations for high voltage designs. A new “Bobbin tab” allows you to see the winding structure (Figure 1), as well as export the structure in the DXF file format. New 2D Finite Element Analysis (FEA) algorithms produce magnetic field maps that describe the winding magnetic field. The FEA solutions enable calculation of the AC losses for sector wound geometries.

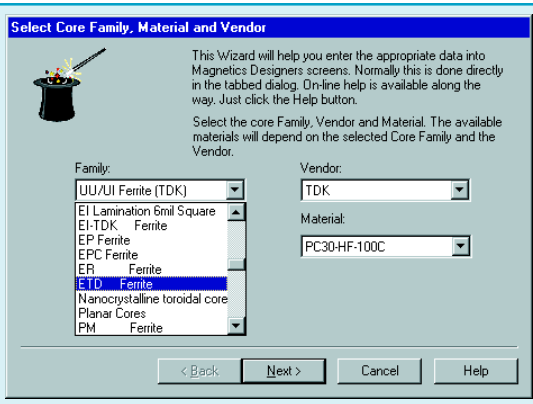
Data entry is eased with the addition of a Design Wizard (Figure 2). An expanded winding screen gives you more per winding information such as current density and winding weight (Figure 3). Silver and aluminum wire types are now supported, along with a core database that contains more than 7,000 cores.

Program Overview

Magnetics Designer synthesizes all types of transformers and inductors. Typical applications include high power transformers for aerospace and industrial power levels, subminiature planar magnetics and general switched mode power supply design. Virtually any single phase, layer or sector wound inductor or transformer, from 10Hz to over 5MHz, can be synthesized with Magnetics Designer. Magnetics Designer is different than other FEA based analysis tools. It actually selects the core geometry and synthesizes the winding structure for you, making you dramatically more productive. You do not have to draw anything or specify any physical design characteristics other than the core family, material and type of wire (formvar, square, Litz, foil, pcb trace) you want to use.

Figure 2, The new Design Wizard helps lead you through entry of the required parameters: Core Family, Material, Wire Type, Operating Frequency, Voltage/ Current per winding, and allowed Temperature rise.

Entering design specifications is a simple matter.



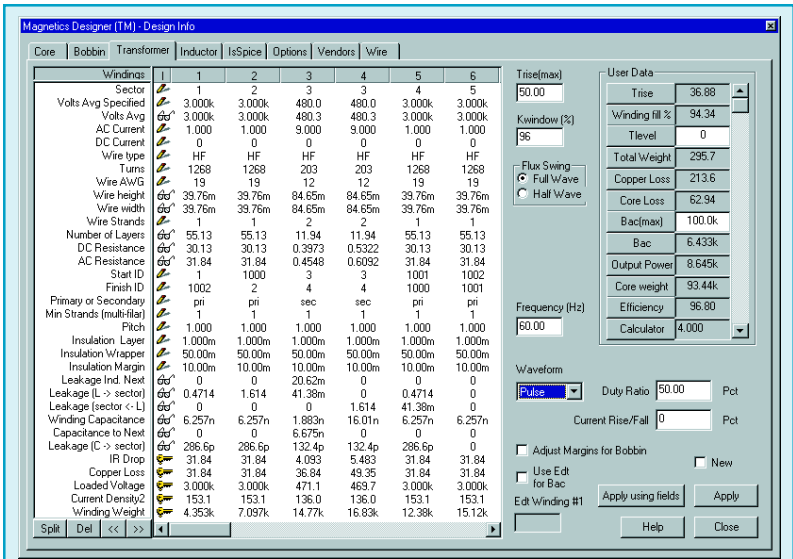


Figure 3. The Major Transformer screen displays more winding information. Major enhancements include the ability to handle split bobbin configurations and more versatile specification of the current waveform. A Fourier series is computed for the specified pulse waveform duty cycle and rise/fall time. New Finite Element Analysis (FEA) algorithms give you more accurate calculation of the AC losses.

What Makes Magnetics Designer Unique

Magnetics Designer performs **synthesis** as well as **analysis** of transformers and inductors. Classical design methods rely on home-grown software programs that are patched together, or “build and test” iterations that are exercised until the appropriate behavior of the prototype component is achieved. Magnetics Designer eliminates these costly design methodologies by accurately synthesizing and analyzing the magnetic structure for you.

Magnetics Designer achieves significant gains in productivity by combining advanced analytical algorithms and 2D FEA techniques in a single, easy-to-use software tool. Initially, multi-parameter optimizations are employed to handle the design variable trade-offs (about 10,000 optimization passes per design). Finite element calculations are performed after the speedier analytical optimization algorithms. Tools which use FEA as the primary solution path can’t perform the design variable trade-offs efficiently due to long run time constraints. Thus, the user is forced to choose the specific core geometry and winding structure. This is a major drawback. **Magnetics Designer, on the other hand, does this for you.**

Since the multi-parameter optimization algorithms are fast, the user can compare designs quickly and easily. The user can change more than 20 parameters such as allowed temperature rise, allowed window fill, number of turns, wire gauge and type, bobbin margins, number of parallel strands, gap length, layer insulation thickness, wrapper thickness, and end margin lengths. The program allows the user to split, move, and interleave windings and set variable size sectors.

The result is a tool that generates an optimized design with accurate calculations of all key performance characteristics from a simple list of electrical, mechanical, and thermal specifications. Designers can consider various geometry, material and winding strategies without actually building the component, thereby ensuring a low cost, efficient design.

More information, application notes, and a demonstration version of Magnetics Designer are available on Intusoft's web site at <http://www.intusoft.com/mag.htm>.

Power Specialist's Book FREE On Web

The "Power Specialist's App Note Book" contains over 35 technical articles on power supply design and power electronics modeling. The papers cover a wide range of topics including: SMPS design, magnetics modeling, signal generator modeling, power semiconductor modeling, and power supply testing. Many useful examples and modeling tips are included, as well as detailed discussions of key power supply design issues.

The book is posted on the Intusoft web site (<http://www.intusoft.com/psbook.htm>) in PDF format. It can be downloaded at no charge.

Power Specialist's App Note Book

Papers on Simulation, Modeling and More



Edited by Charles Hymowitz

Why is this feature important?

The ICAP/4 simulation system contains many unique features. If you have used, or are using other SPICE packages, you may not be familiar with them. In this installment we discuss **Automated Measurements**.

The traditional post analysis methods for SPICE output data are analogous to using an oscilloscope. You select and display a waveform from the list of saved data, move cursors on the waveform and make your measurement (peak-peak, max, min, etc.) This process, while simple, is too time consuming when dozens of waveforms must be analyzed and hundreds of measurements must be made. This is the case when performing design validation, failure analysis or test program development.

Fortunately, ICAP/4 includes a new paradigm for waveform analysis. It's called Automated Measurements. The process is simple. Using a series of "Wizard" dialogs (Figure 4), you setup the desired measurements. Virtually any circuit quantity can be recorded, including DC, rise/fall time, prop. delay and triggered measurements on voltages, currents, or power dissipations. You do not have to write any scripts or do any programming to setup the measurements. The measurements are automatically performed by IsSpice4

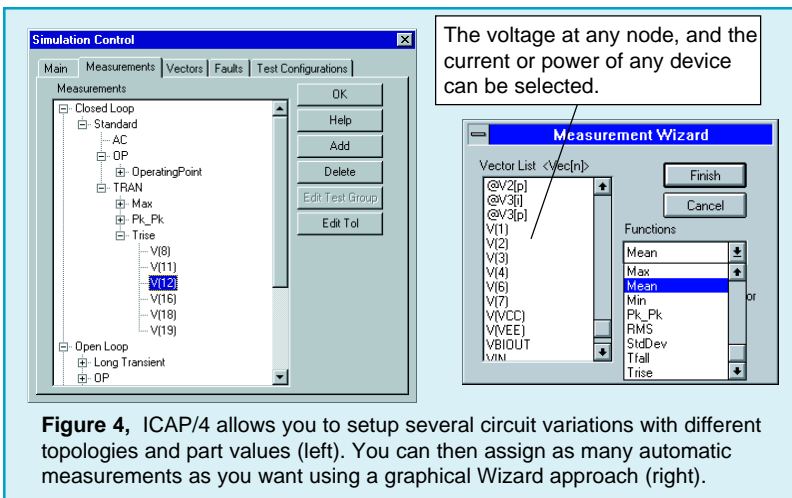


Figure 4, ICAP/4 allows you to setup several circuit variations with different topologies and part values (left). You can then assign as many automatic measurements as you want using a graphical Wizard approach (right).

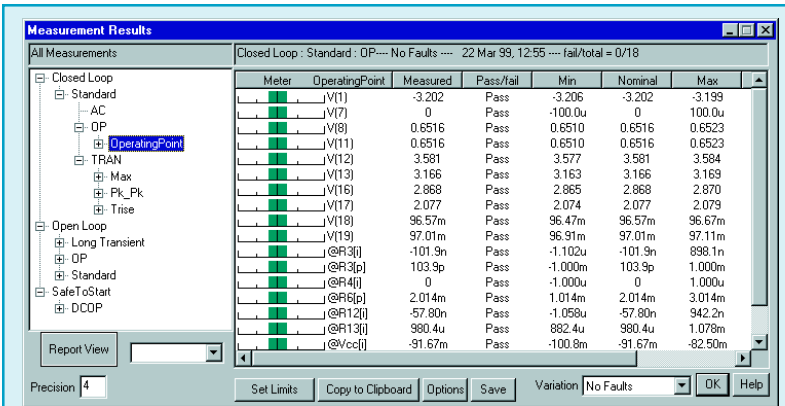


Figure 5, The measurements are recorded automatically after the simulation is complete. The nominal measurement performance, shown above, can be viewed after setting the min/max limit boundaries for each measurement.

each time a simulation is run, and the results are compiled into a report (Figure 5). You can set limits or stress alarms for each measurement. The report will tell you how any circuit change (stimulus, part value, model parameter, etc.) affects your design (Figure 6). The best part is that the data gathering, calculation of the measured quantity, and report generation are completely automatic and transparent to the user. No user interaction is needed to process the measurements!

Why is this feature important? It gives you a general data analysis framework that is far more productive than the traditional methods of waveform analysis.

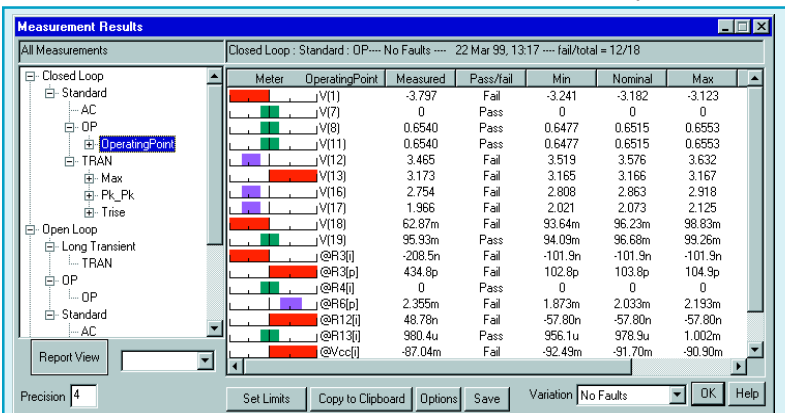


Figure 6, The measurements (Measured column) are recorded automatically after the simulation is complete, and are compared with the nominal values. Variations against the test limits can be easily seen using the Meter column.

Power Inverters

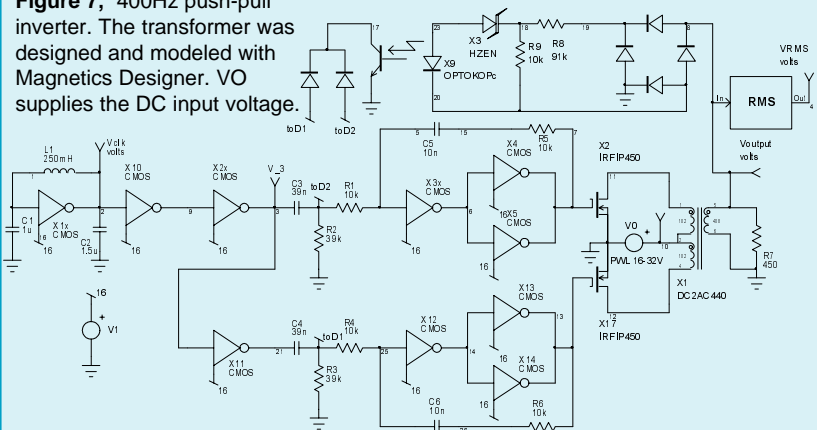
by Karl
Heinz
Muller

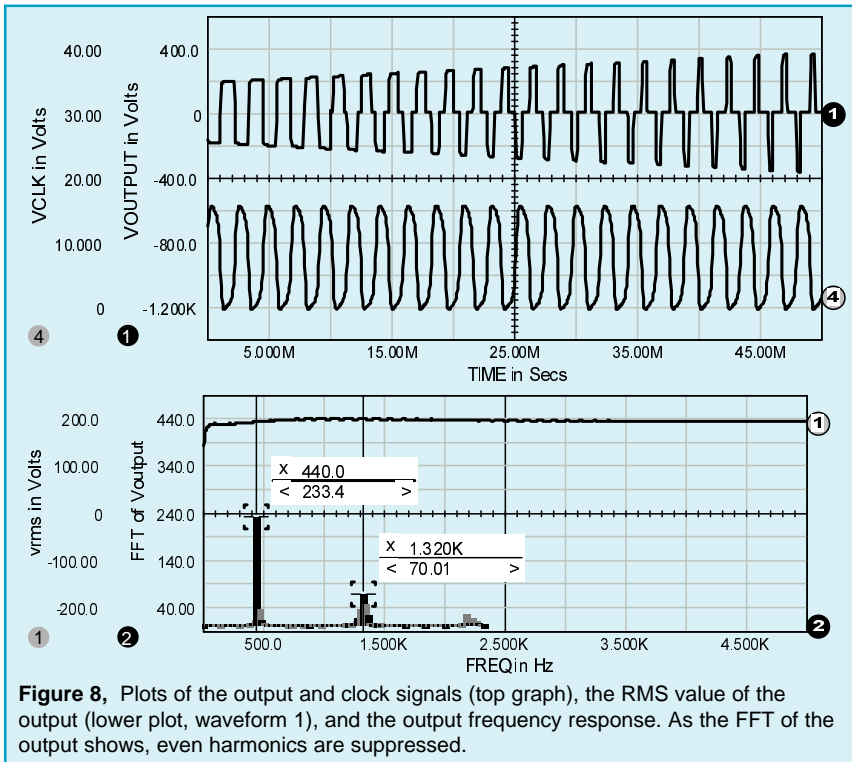
Inverters, as defined here, convert DC power into AC power. They are widely used in single and three phase industrial applications. To limit heat dissipation, efficiencies greater than 90% are of primary interest, especially in the kilowatt range. Power transistors therefore, operate as switches, generating a square wave voltage at the output terminals as shown in the 400Hz-Inverter in Figure 7. Many types of equipment operate satisfactorily on a square wave supply voltage, but in some instances, a filter at the output is necessary (as shown in Figure 9) to suppress objectionable harmonics.

The power MOSFETs work in a push-pull mode. No net direct current flows through the center-tapped transformer, thereby reducing its size and weight. In a similar manner, all even-order harmonics are cancelled by symmetry (Figure 8). Stabilization of the output voltage is accomplished by a feedback loop that regulates the pulse width of the gate waveforms for the power MOSFETs. Figure 8 shows that with increasing DC-supply voltage, V_0 , the pulse width of output voltage decreases accordingly, keeping its RMS value at a constant level.

The transformer design and SPICE model was created with Magnetics Designer. The following specifications

Figure 7, 400Hz push-pull inverter. The transformer was designed and modeled with Magnetics Designer. V_0 supplies the DC input voltage.





were entered: Operating Frequency: 440Hz, Core Family/Material: EI Lamination 6mil Square, Temperature rise above ambient: 35 degrees C and

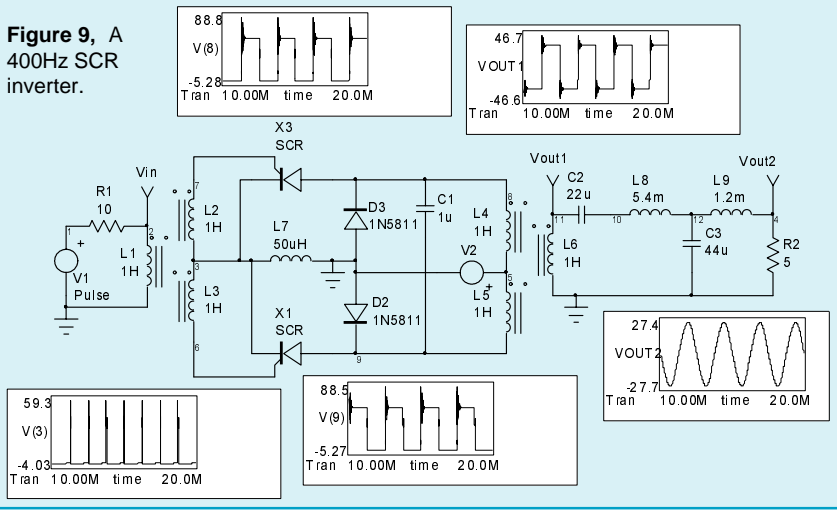
	#1p	#2s	#3p
Voltage per winding	62	880	62
AC RMS current per winding	3.4	350m	3.4

The design synthesized by Magnetics Designer had the following performance characteristics:

Turns wire	57	810	57
Wire Gauge	19	29	19
Core Loss (Watts):	1.959		
Copper Loss (Watts):	5.464		
Weight: 2.014 (Core Weight: 1.228,	Copper Weight: 0.7856, all in pounds)		

The digital gates were modeled at the transistor level. They could have been modeled with digital gates, but the close ties to the analog elements would have required several A-D and D-A bridges (8 total) which in themselves can increase circuit complexity. In the end,

Figure 9, A
400Hz SCR
inverter.



the complexity is approximately equal. ICAP/4 includes digital gates modeled at the transistor level and at the gate level, so users can have a choice of which approach to take depending upon the ratio of digital to analog circuit content.

400Hz SCR Inverter

One of the major applications for SCRs is converting DC to AC power in the kilowatt range. Again, high efficiency is an important feature. For supply voltages above 24Vdc, values greater than 90% may be obtained. To avoid unilateral saturation of the output transformer and to make use of the full dynamic range of the magnetic material, a parallel inverter configuration is used to deliver symmetrical square waves under all load conditions (Figure 9). All odd harmonics are cancelled by the push-pull mode of operation. Feedback diodes prevent the voltage across the primary windings from exceeding the supply voltage.

Because SCRs cannot be turned off by their gate signal, a return to the blocking state has to be forced by reversing the anode voltage. Commutation is initiated by turning on the nonconducting SCR. For a small period of time, both SCRs are conducting. To avoid a short circuit, a small inductance, L7, is inserted. It operates as a choke by taking up the battery voltage. Finally, the conducting SCR is turned off by the negative charge that is stored in

Continued on pg. 13

Using SPICE More Effectively

Continued
from pg. 1

address some of them and provide advice and insight on how to avoid problem areas.

Ideal Elements: Parasitics

Characterizing the circuit, also known as modeling, is one of the most important aspects of simulation. Modeling issues pervade the entire simulation process. Therefore, it is not surprising to find pitfalls with even the most basic passive elements. In most schematic packages, placing a resistor, capacitor or inductor inserts an ideal version of the element. This means that there are no parasitics included.

Fortunately, such parasitics aren't usually critical to the design performance. Well, at least you hope you've designed your circuit to be parasitic intolerant. But as far as the simulation accuracy is concerned, it's up to you to determine where you want to add complexity in terms of element parasitics.

R-L-C Component Frequency Spectrum Limitations

Electronic circuits are always modeled over a finite range of the electromagnetic frequency spectrum. There is really no need to describe operation of electrical components from DC through RF, to microwave and on to the optical, x-ray and gamma ray spectrum. Not only would the model be complex, it would also be inaccurate and would provide unnecessary information.

The nodal system of equations which SPICE solves are valid only when the circuit elements are small compared to the wavelength of the highest frequency of interest; this limits the high frequencies below the optical band. Even with this limitation, the useful frequency range runs from milli-hertz to many gigahertz, over 15 orders of magnitude. The reactance chart of Figure 10 shows the expected range of parasitic inductance and capacitance over this range. The darkly shaded region represents the values of impedances that are realistically achieved with common R-L-C components and printed circuit board technology. The lightly shaded region of impedances can

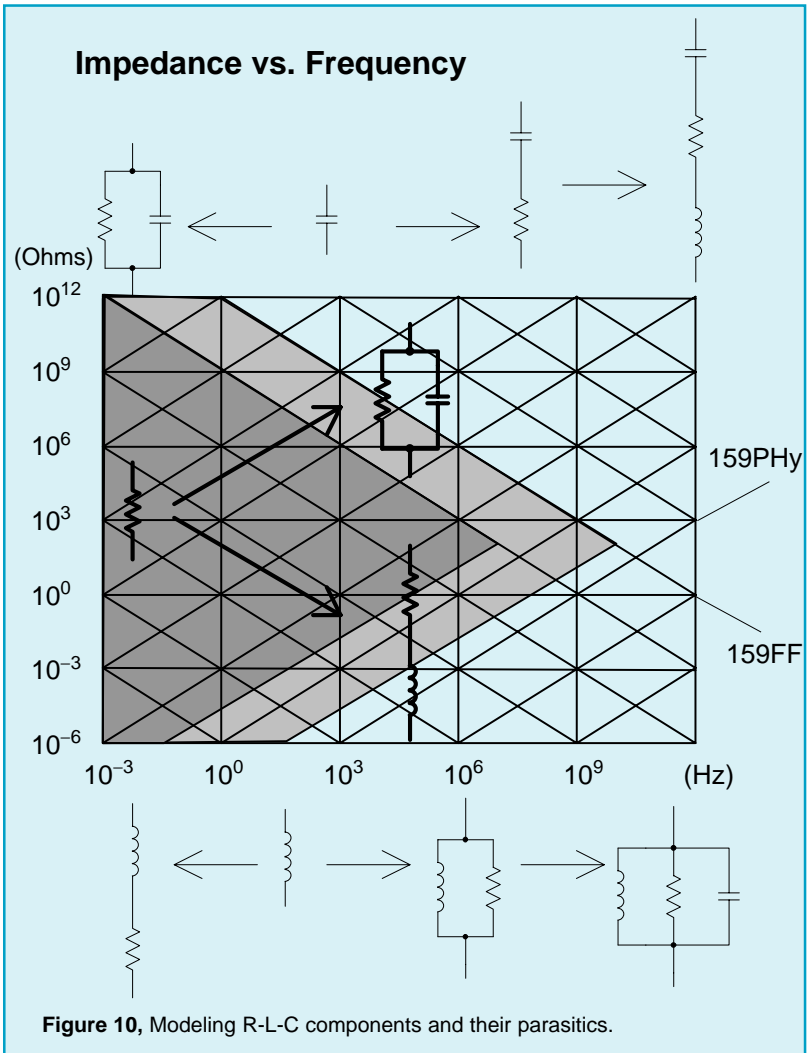


Figure 10, Modeling R-L-C components and their parasitics.

be viewed as a transition region where parasitics become increasingly important. The boundary between the lightly shaded region and the unshaded region represents the smallest capacitance or inductance parasitic value, and therefore values in the unshaded area are unrealistic for single discrete components. At the high frequency end, this suggests the use of smaller geometry microwave integrated circuits, while extending the impedance range at lower frequencies requires larger geometries than are ordinarily found in PC Card technology.

The modeling additions for various components are shown in the pictorial inlays. First, resistors are basically defined at DC, and turn into effective capacitors or inductors, their impedance converging to that of free space divided by the square root of the dielectric constant, something in the neighborhood of 125 Ohms for PC cards. Similarly, capacitor and inductor impedances funnel toward the impedance of the propagating medium at high frequencies, and become resistive as the frequency approaches DC.

SPICE built-in models provide reasonable first order approximations for circuit behavior. Unfortunately, most circuits must be designed to be tolerant of second order effects, and sometimes to compensate in order to achieve a desired performance level. Most frequently, the parasitic and second order effects are related to changes in frequency.

The Intusoft model libraries and IsSpice4 can help determine which parasitics, if any, will affect your design performance. Subcircuit based models can hide

```
.SUBCKT CAPACITOR1 1 2 {ESR=1M ESL=20N RLEAK=100MEG C=???}
* Parameters: C Capacitance in Farads, ESR ESR in Ohms
* ESL ESL in Henries, RLEAK Leakage resistance in Ohms
C1 1 3 {C}
R1 3 4 {ESR}
L1 4 2 {ESL}
RL 1 2 {RLEAK}
.ENDS

.SUBCKT INDUCTOR1 1 2 {DCR=1M CP=??? L=???}
* Parameters: L Inductance in Henries, DCR DC series resistance in Ohms
* CP parallel capacitance in Farads
L1 1 3 {L}
R1 3 2 {DCR}
C1 1 2 {CP}
.ENDS

.SUBCKT RESISTOR1 1 2 {R=1K LS=??? CP=??? TC=100U}
* Parameters:
* R - Resistance value in Ohms
* CP - Parallel Capacitance in Farads
* LS - Series Inductance in Henries
* TC - Temperature coefficient in 1/degrees C, 100ppm default)
C1 1 2 {Cp}
R1 1 3 {R} RMOD
.MODEL RMOD R TC1={TC}
L1 3 2 {Ls}
.ENDS
```

Figure 11, Passive component subcircuit netlists including 1st order parasitics. The parasitic values are passed into the subcircuit at runtime or left at their default values.

the parasitics, while parameter passing gives you the freedom to specify their values. The nonideal passive element subcircuits, shown in Figure 11, are included in all ICAP/4 packages. Note: Sophisticated models for tantalum and ceramic capacitors were covered in newsletters #44 (Nov. '95) and #45 (Feb '96).

Power Inverters

Continued
from pg. 9

commutating capacitor C1. Values of C1 and L7 depend upon the supply voltage, the SCR recovery time (10-20 μ s) and the current to be commutated.

To get an undistorted sine wave output, a wave shaping filter has been added to eliminate all harmonics in the square wave voltage. The transfer function of the filter is independent of the load at the fundamental frequency.

Rload=1 to 10Zo (equals 5 here), Zo=3 Ω , fo=400Hz, C2=1/(12 π foZo)=22u, C3=1/(6 π foZo)=44u, L8=4.5Zo/(2 π fo)=5.4m, L9=Zo/(2 π fo)=1.2m. Additionally, the filter presents a capacitive input impedance to the SCRs to support commutation.

SPICE Model Web Links

Version 8.x.6 of the ICAP/4 simulation system includes over 1,000 new models. Some of the new models are from Maxim (op-amps, comparators), Polyfet (RF power MOSFETs), Siemens (power MOSFETs, diodes, small-signal and power BJTs), and Siliconix (power MOSFETs). In addition, Intusoft was given special permission to include SPICE models from International Rectifier for power MOSFETs, IGBTs, and diodes.

The models on the current Intusoft Newsletter floppy disk (available via subscription) include small signal and power semiconductors, and opto-electronics from Motorola, linear amplifiers and converters from Analog Devices, varistors and power MOSFETs from Harris, op-amps from National Semiconductor, small signal semiconductors from Fairchild, as well as Vacuum tube models from Duncan Amplification <http://www.duncanamps.simplenet.com/>.

SPICE Model Web Links

Listed below are links (Part 1 of 2) to manufacturer's web sites where SPICE models can be found. You can always find the most current links at the Intusoft web site, at www.intusoft.com/slinks.htm.

ICAP/4 Deluxe, ICAP/4 Professional and Test Designer users and those who have our vendor supplied IC/op-amp models option should note that all of the models posted on these vendor's web sites are already in your system. As new models are posted on vendor's sites, Intusoft does the integration work for you. Intusoft tracks the models, tests them, makes symbols and posts the updated files on our web support pages.

Vendor	Web Address	Model Types
Allegro MicroSystems	www.allegromicro.com/	Power ICs
Advanced Linear Devices	www.aldinc.com/opamp.html	Op-amps
Analog Devices	products.analog.com/products_html/list_gen_spice.html	Op-amps, Precision Instrumentation Amps, Analog Switches, Multiplier/Divider, Buffer Amplifier, Balanced Modulator/Demodulator, Voltage References, NPN/PNP
Apex Microtechnology	www.teamapex.com/design_tools.html	Power Op-amps
Burr-Brown	www.burr-brown.com/Products/Products.html	Op-amps, Precision Instrumentation Amps, Buffers, Isolation Amps, Video Mux, Switched Input Integrator, Photodiode w/amplifier, Voltage controlled amplifier
Comlinear (National)	www.national.com/models/spice/ComLinear/	Voltage and Current Feedback Op-amps, AGC+Amplifier, VGA/2-Quadrant Multiplier, Analog Mux
elantec	www.elantec.com/PRODUCT/gateway.html	Op-amps, Buffer Amps, Line Drivers, Fet Buffer, Closed-Loop Buffer, Current mode Multiplier, Video Amp, Fast Buffer, NPN/PNP Models
Fairchild Semiconductors	www.fairchildsemi.com/models/Discretes/	Power Mosfets, JFETs, BJTs, Diodes
F.W. Bell	www.fwbell.com/Catalogs/Sensors/Hall_Sensors/Spice/spice.html	Hall Effect Sensors
Harris Semiconductor	www.semi.harris.com/families/models.htm	Op-amps, Power Mosfets, MCT
International Rectifier	www.irf.com/~ir/product-info/spice/	Power Mosfets, Rectifiers, IGBTs, Hexfeds, Schottky diodes

Training for Intusoft SPICE

Interface Technologies develops and delivers training classes to help design specialists and engineers maximize their use of ICAP/4 Windows. Interface Technologies' classes are designed to minimize the time to learn ICAP/4, highlight and explain commonly used features, provide a hands-on, interactive training experience, suggest a methodology that provides predictable, successful results, and provide a learning experience that amplifies the benefits of using ICAP/4.

Why: Compress the learning curve and maximize the benefits of using Intusoft products.

Who: Any person that needs to use the ICAP/4.

What: Intensive two day class with hands-on labs.

When: May 19-20, July 14-15, Oct. 13-14, and Dec 8-9, 1999.

Where: Chicago, IL area (or on-site for 5 or more students).

How: Call Dan Waterloo at Interface Technologies:

Tel (800) 357 - 1636, email dan@i-t.com, or web www.i-t.com.

The two day class costs \$1200/student.